

MON. # 714 DISC./ANL
 CENTER LINE WEST
 STREET & 5' NORTH
 NORTH STREET.

MON. # 670 W/BOLT
 CENTER LINE WEST STREET & 4.7'
 SOUTH OF CENTER LINE SOUTH STREET.

MON. # 715 DISC./ANL
 5' EAST OF CENTER LINE EAST
 STREET & 5' NORTH OF
 CENTER LINE NORTH STREET.

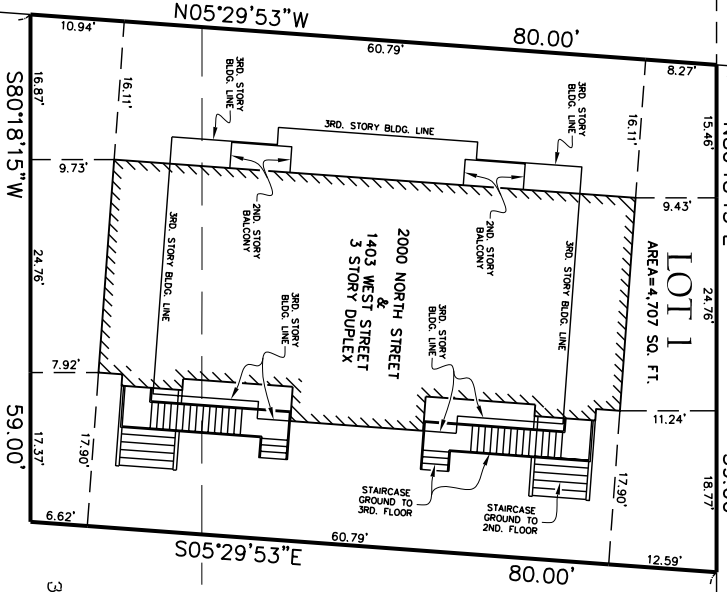
NORTH STREET
 (60' WIDE ON ANGLE)

WEST STREET
 (60' WIDE ON ANGLE)

EAST STREET
 (60' WIDE ON ANGLE)

SOUTH STREET
 (60' WIDE ON ANGLE)

MAP OF THE GRAVES & TAYLOR TRACT
 BLOCK 2,
 (223 M. 171)



LOT 1
 AREA=4,707 SQ. FT.

**2000 NORTH STREET
 &
 1403 WEST STREET
 3 STORY DUPLEX**

MONUMENT LINE: N05°29'53"W - 669.78' MON. TO MON.
 600.08'

MONUMENT LINE: S05°30'18"E - 669.83' MON. TO MON.
 600.13'

30.00'
 30.00' ON ANGLE

34.70' ON ANGLE

269.93'
 MONUMENT LINE: S80°18'15"W - 334.97' MON. TO MON.

34.70' ON ANGLE

35.00'
 35.00' ON ANGLE

34.70'

MON. # 669 DISC./PUNCH
 5' EAST OF CENTER
 LINE EAST STREET &
 4.7' SOUTH OF CENTER
 LINE SOUTH STREET.

**A TWO UNIT SUBDIVISION
 FOR CONDOMINIUM PURPOSES**

A PORTION OF LOTS 2 & 3, BLOCK 2,
 MAP OF THE GRAVES & TAYLOR TRACT,
 (5 M. 29),
 CITY OF BERKELEY, COUNTY OF ALAMEDA,
 STATE OF CALIFORNIA.

SEPTEMBER, 200X SCALE: 1"=10'

OWNERS:
 JOHN DOE AND
 JULIE DOE
 437 NORTH STREET
 BERKELEY, CA 94707

SURVEYOR:
 BAY AREA LAND SURVEYING
 961 MITCHELL WAY
 EL SOBRANTE, CA 94803

P.M. 1111

BASIS OF BEARING:
 MONUMENT LINE IN NORTH
 STREET TAKEN AS N80°18'15"E
 AS SHOWN ON P.M. 0001
 (1 M. 2).

BENCHMARK:
 MONUMENT PIN AT THE
 INTERSECTION OF NORTH STREET
 AND WEST STREET.
 ELEV.=193.008'.
 CITY OF BERKELEY DATUM.

LEGEND	
	FOUND CITY MONUMENT
	BUILDING FOOTPRINT

